

# Balcarras Teaching School - Pastoral Lead Forum

James Saunders

Early Help Partnership Manager

Families First

**“Early Help: providing support as soon as a problem emerges, at any point in a child or young person’s life”.**

**Working Together 2015**

# Early Help Partnership

Police  
YST

Schools  
Alternative  
Provision  
Early Years

Community  
& Voluntary  
Sector

FAMILY

Health  
HV Midwife  
CYPS  
Mental Health

Housing

C&F Centres  
targeted family  
support

Families  
First

“ All staff should be aware of the early help process, and understand their role in it. This includes identifying emerging problems, liaising with the designated safeguarding lead, sharing information with other professionals to support early identification and assessment and, in some cases, acting as the lead professional in undertaking an early help assessment.

Keeping Children Safe in Education, Statutory Guidance for Schools and Colleges, DfE, Sept 2018

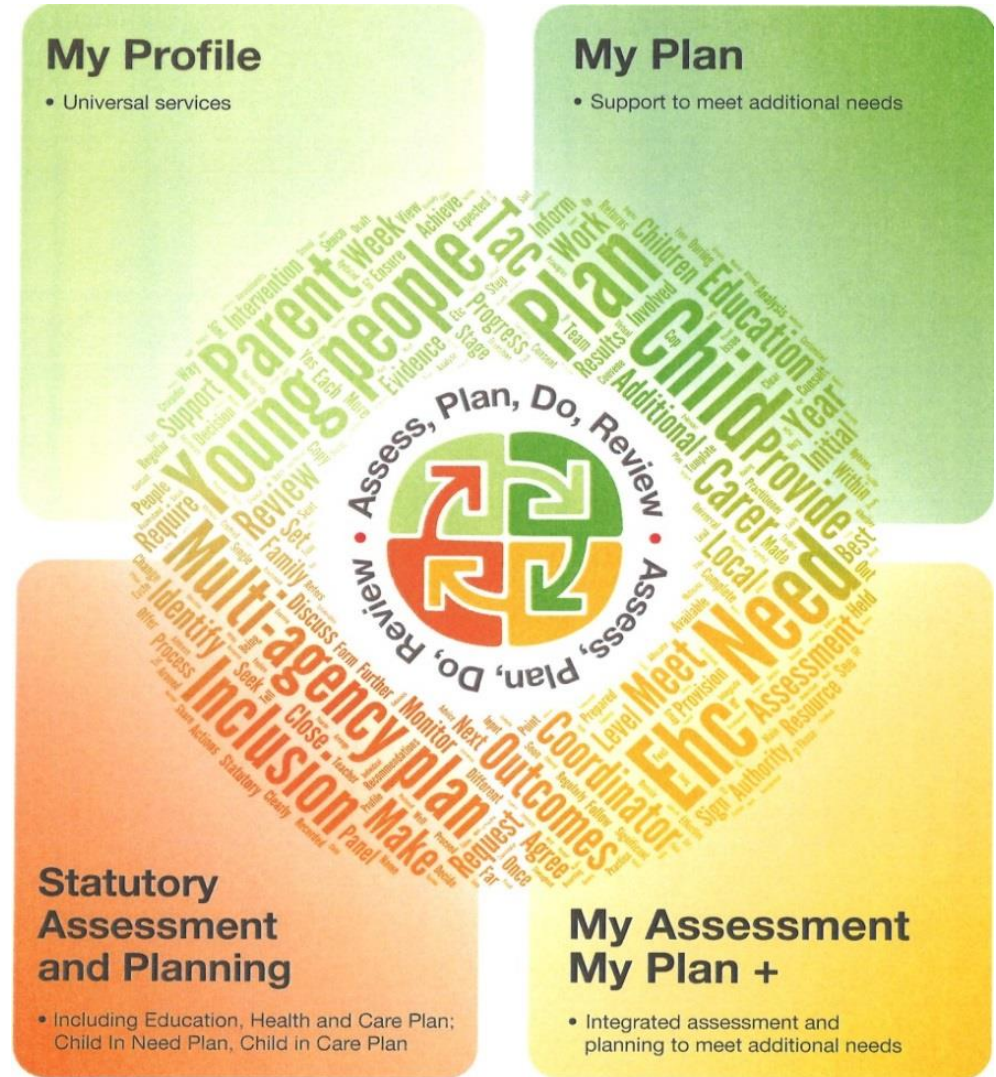
## A Graduated Approach

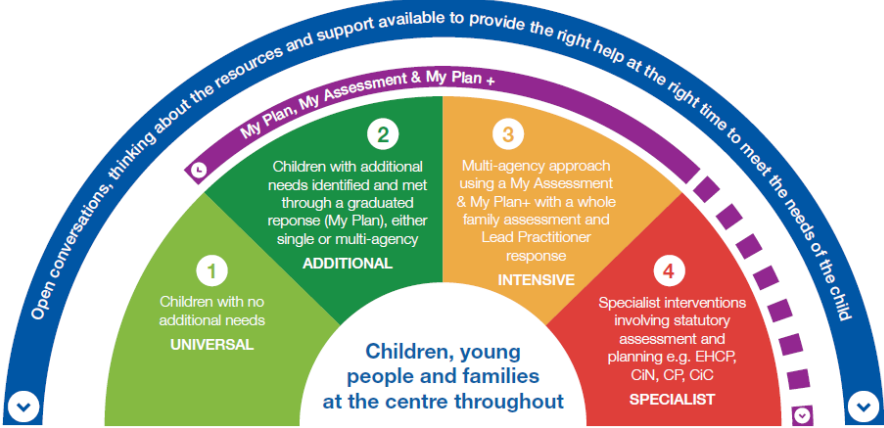
Enabling the right level of intervention and support when needed.



# Gloucestershire's Graduated Pathway

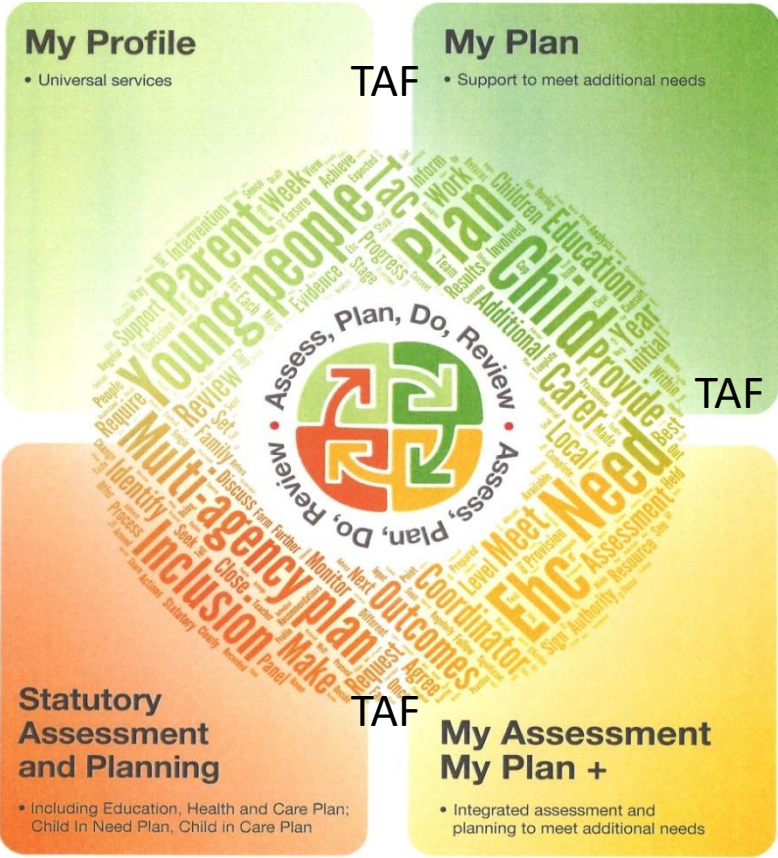
- Consent
- My Plan
- My Plan +
- Review





Consent to share information is required unless there are concerns that to do so would place the child at greater risk of harm

If you think a child or young person is at immediate risk of significant harm, contact The Front Door on 01452 426565 (option 1) - in an emergency always call 999



**The Graduated Pathway and the Levels of Intervention sit alongside one another and enable us to assess risk and help us to decide how to respond to the individual needs of children, young people and their families.**

## **Some things to remember:**

- \*Children and Young People are central to the assessment and plan and should always have their views and wishes explored
- \*Gathering information from all practitioners involved will build up a holistic picture of the family
- \*Ensuring that both parents are spoken to even if they do not live together
- \*Taking time to analyse the information you have been given is essential in ensuring that you assess risk and identify needs
- \*Being aware of significant events and patterns of behaviour can help to analyse the current situation
- \*Writing and agreeing the plan in a Team Around the Family meeting helps to ensure the family are involved and in agreement with the outcomes and actions identified



# Registering Early Help Plans/Assessments



**It is important to provide a coordinated response to children and families; and reduce duplication of resources wherever possible.**

Send to: [cheltenhamearlyhelp@gloucestershire.gov.uk](mailto:cheltenhamearlyhelp@gloucestershire.gov.uk)



# Glos. Families Directory – A central point for information and resources

The screenshot shows the homepage of the Glos. Families Directory. At the top left, there is a green button with a hamburger menu icon and the text "Useful Services 0". To the right, there is a logo for "glofamilies directory" in green, accompanied by a cartoon illustration of a sun, clouds, and a family walking towards a house. Below the logo is a green navigation bar with the following links: Home, Directory (with a dropdown arrow), Things To Do, Contact Us, Help, Accessibility, and Add Your Entry. On the far right of this bar is a white button with a green border that says "Register/Sign In". Below the navigation bar is a search area with two input fields: "Keyword(s)" and "Postcode (Optional)", each with a magnifying glass icon to its right. The main content area features a large background image of a Gothic cathedral. Overlaid on this image is the text "Welcome to the glofamilies directory". Below this text are three colored boxes: a pink box on the left for "Family Information Directory", an orange box in the middle for "Local Offer", and a blue box on the right for "Information for Practitioners". Each box contains a list of sub-topics and a "MORE" button at the bottom.

Useful Services 0

glofamilies directory

Home Directory Things To Do Contact Us Help Accessibility Add Your Entry Register/Sign In

Keyword(s) Postcode (Optional)

Welcome to the glofamilies directory

**Family Information Directory**

- Family Support & Advice
- Childcare
- Education
- Young People
- Things to do

MORE

**Local Offer**

- Young People's Local Offer
- Parent and Carer's Local Offer

MORE

**Information for Practitioners**

- Grants, Charities & Commissioned Services
- Graduated Pathway of Early Help and Support
- Practitioner Resources and Contacts
- Childcare Providers
- Legislation, Guidance & Policy Documents
- Training, Events & Newsletters

MORE

[www.glofamiliesdirectory.org.uk](http://www.glofamiliesdirectory.org.uk)

# Families First Teams



Families  
First

## **Early Help Coordinators**

Offer advice, guidance and support around all aspects of the Graduated Pathway of Early Help and support including supporting with TAF meetings, commissioning services and developing/ revising settings Early Help offers

## **Community Social Workers**

Support practitioners with assessing levels of risk using Gloucestershire Levels of Intervention guidance. CSW's will support at TAF meetings where it is felt that a family may be moving between levels 3 and 4.

## **Family Support Workers**

FSW's work directly with children, young people and their families offering support around issues which are impacting on the well-being of the young person when those needs sit at level 3 and 4 of the LOI Guidance

## **Employment Advisors**

Offer advice to practitioners and families around employment and the positive impact this can have on a family. They can come into settings to advise staff or visit families at home along with the Lead Practitioner to offer individual support

# Useful Contacts

**Cheltenham Families First Team – 01452 328160**

## **Cheltenham Early Help Co-ordinators:**

Theresa Brown – 01452 328385

[theresa.brown@gloucestershire.gov.uk](mailto:theresa.brown@gloucestershire.gov.uk)

Sinead Kirk – 01452 328988

[sinead.kirk@gloucestershire.gov.uk](mailto:sinead.kirk@gloucestershire.gov.uk)

Jubaida Rashid – 01452 324386

[jubaida.rashid@gloucestershire.gov.uk](mailto:jubaida.rashid@gloucestershire.gov.uk)

**Multi-Agency Safeguarding Hub (MASH) – 01452 426565**

**Family Information Service – 0800 5420202**